



Park Road  
Poole BH15 2FY  
£1,500 Per month







## Details

Situated within a contemporary purpose built development constructed in 2021, this beautifully presented two double bedroom apartment combines modern living with an exceptional location, just a short stroll from Poole Park and the vibrant bars, cafés, and restaurants of Ashley Cross.

### Property Comprises

The property features a bright and spacious open plan kitchen, lounge, and dining area, enhanced by large windows framing attractive tree lined views and allowing you to enjoy both sunrise and sunset aspects. The stylish grey shaker style kitchen is complemented by wood effect worktops and comes fully equipped with integrated appliances.

Both bedrooms are generous doubles, with the principal bedroom benefiting from fitted wardrobes, an en suite shower room, and a useful airing cupboard. The contemporary main bathroom and en suite are finished to a high standard with modern fittings throughout.

Additional conveniences include a separate utility cupboard complete with a freestanding washer dryer, secure bike storage, lift access and access to a stunning communal terrace with far reaching views and seating areas ideal for relaxing or socialising.

Rarely available, this apartment further benefits from two allocated parking spaces, making it an excellent opportunity for professionals, couples, or sharers seeking stylish coastal living in a sought after location.

Available on an unfurnished basis from 17th August.

Council Tax Band - C  
EPC Rating - D







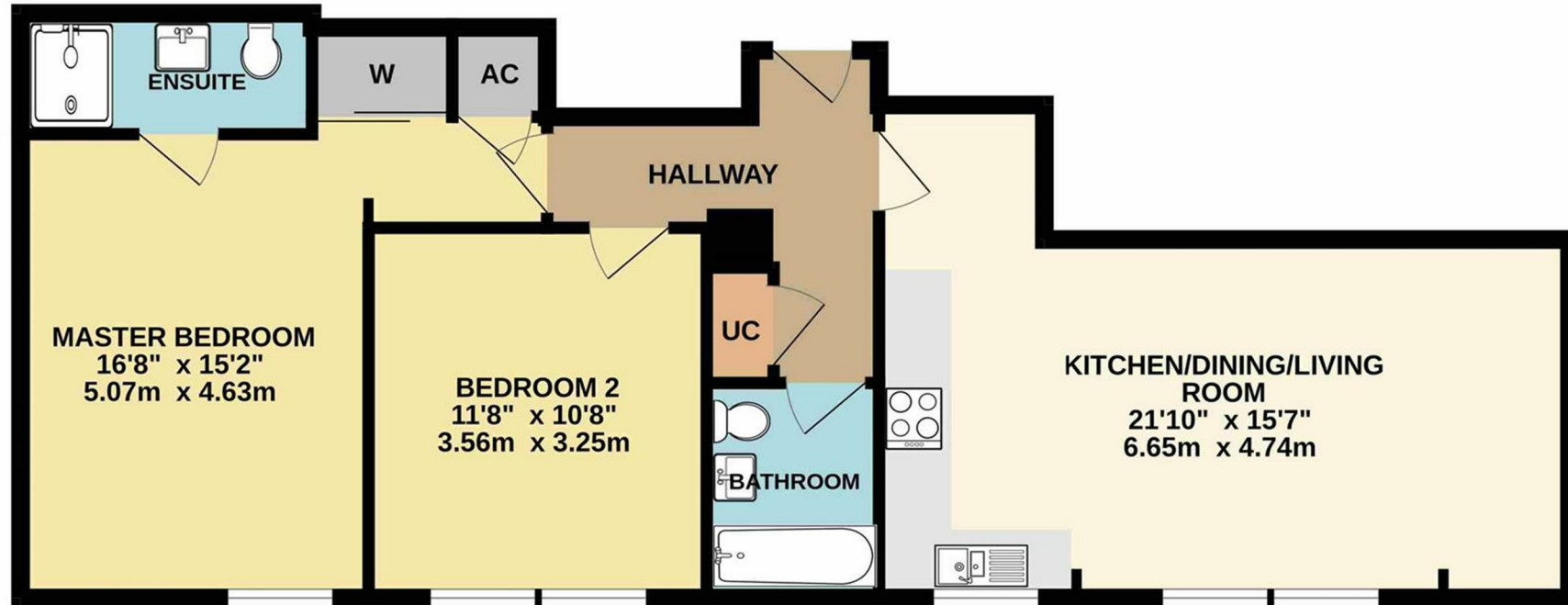
## More Information

- Contemporary Apartment
- Two Parking Spaces
- Integral Appliances
- En Suite to Master
- Two Double Bedrooms
- Conveniently Situated
  - Fourth Floor
  - Lift Access



[hello@davidsonsestates.com](mailto:hello@davidsonsestates.com) | [davidsonsestates.com](http://davidsonsestates.com)

FOURTH FLOOR  
736 sq.ft. (68.4 sq.m.) approx.





DAVIDSON ESTATES  
sales & lettings

# CONTACT US

*Whichever way suits you...*

07557 025044 | 07713 870543

hello@davidsonsestates.com

01202 287606

www.davidsonsestates.com

